

ActivCard AAA Server

ActivCard delivers a scalable strong authentication solution based on LDAP to secure WLAN, remote access, web access, and e-business applications across enterprise infrastructure.

Highlights

Secure Dial-up

Supports any third party dialer and is integrated with Microsoft® Dialer.

Secure VPN

Supports all market leading VPN vendors and seamlessly integrates with Check Point™.

Secure Web Access

Provides strong one-time password authentication for any website running on IIS, Sun ONE™, or Apache® web servers as well as Microsoft Outlook® Web Access.

Secure Wireless LAN

Integrates 802.1x authentication which meets Wireless Protected Access (WPA) standards and supports Microsoft® and Cisco® clients.

Secure Terminal Services

Secure login to Citrix® MetaFrame® Presentation Server - Web Interface or Microsoft Terminal Services.

Enterprise AAA Server with Integrated WLAN Security

ActivCard AAA Server is a strong scalable RADIUS and TACACS+ compliant server. Offering full Authentication, Authorization, and Accounting services, ActivCard AAA Server enables enterprises to secure and manage WLAN and remote network access with two-factor authentication. It is the only one-time password authentication server on the market that has native WLAN security and fully integrates with your existing corporate directory.

Key Advantages

> Compelling ROI:

- Provides a lower total cost of ownership than the competition—even if existing two-factor remote access technology is in place.
- LDAP-centric integration eliminates dual administration.

> Smooth Bridge and Migration:

- Supports all current and future authentication needs.
- Allows enterprises to deploy a mixed environment of static passwords, tokens, soft tokens, USB keys, and smart cards to allow migration from a single function token solution to a multi-application smart card-based environment.

> Ease-of-Use:

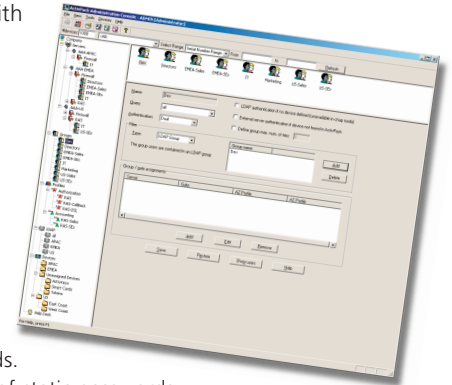
- Brings the ATM experience to network computing, simplifying the user experience with the universally accepted PIN entry method.
- PIN entry allows access to multiple authentication credentials on a single smart card device.

> Enhanced Security:

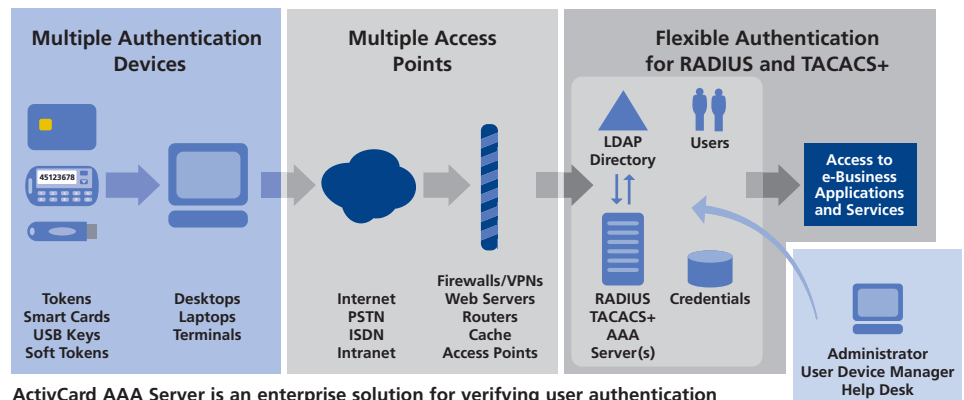
- Integrated WLAN security Wireless Protected Access (WPA) 802.1x authentication.
- Allows local initialization of tokens and smart cards, ensuring that keys are securely deployed.
- When deploying smart card devices, all private keys are generated and stored on the smart card providing secure storage and protection from unauthorized users.

> Easy Implementation and Administration:

- Supports LDAP directories and SQL compatible databases, therefore requiring no proprietary database—enabling centralized administration with distributed authentication.
- Designed for easy installation and deployment.



ActivCard AAA Server Architecture for Remote Access



ActivCard® AAA Server

Specifications

ActivCard AAA Server Components

- > Administration Console
- > Authentication Server (RADIUS, TACACS+, IEEE 802.1x)
- > Optional Components
 - Web help desk & self service portal
 - Web access agent (IIS & Sun One)
 - Citrix Presentation Server - Web Interface
 - Realm Proxy
- > Interfaces and APIs
 - Help desk and self service interface web API (SOAP/HTTPs)
 - Remote Authentication API (ANSI C)

Administration Services

- > Administrator
 - Manage authentication server parameters and access gates
 - Define authorization, authentication and accounting profiles
 - Define authorization profiles based on conditional statement
- > Audit Manager
 - Consolidate, view, and delete auditing logs
- > Device Manager
 - Create, delete, and initialize devices
 - Assignment of devices
- > Help Desk
 - Lock, unlock, and resynchronize personal devices
 - Activate, deactivate emergency access
- > Self Service Portal
 - Unlock and resynchronize
 - Report lost, stolen devices

Security Services

- > EAP-TLS, PEAP-GTC, PEAP-MSCHAPv2
- > Authenticate users from routers, firewalls, APs, VPNs, or Web servers
- > Encryption of:
 - Administration database
 - Remote administration sessions
 - Device to server authentications
 - Authentication server exports
 - User PIN, credentials, and keys
- > Import/export secret key management

Authentication Options

- > One-Time Password, Static Password, LDAP Password, X509 Certificate, Short Message Service (SMS)
- > Hardware tokens
 - ActivCard Token
 - ActivCard Keychain Token
- > Soft Token for PC, JavaPhone™, Palm® and PocketPC
- > USB Key Java 64k
- > 32k, 64k Java Card™

Compliance to Industry Standards

- > Data Encryption Standard: 3DES
- > Challenge/Response: ANSI X9.9
- > Key Management: ANSI X9.17
- > Radius RFC 2865, 2866 and 2869
- > EAP-TLS RFC 2716

Compatibility

- > Any RADIUS and TACACS+ server or client (Firewalls, VPNs, Routers, 802.1x compliant Access Points)
- > Microsoft and Cisco® 802.1x clients
- > Microsoft RAS client
- > Outlook Web Access - Forms-Based
- > Check Point VPN-1 SecuRemote™
- > Check Point FireWall-1®
- > Nortel Networks™ Contivity
- > Citrix MetaFrame Presentation Server - Web Interface
- > Cisco Systems Secure PIX® Firewall
- > Cisco Systems Secure VPN
- > NetScreen® Firewall and VPN
- > Oracle® databases, Microsoft SQL Server, Microsoft Desktop Engine
- > Directory Services: Microsoft Active Directory, Sun Java™ System Directory Server, Novell® eDirectory™, IBM® Tivoli® Directory Server, Critical Path Directory Server
- > IIS, Sun, and Apache Web servers
- > Leading reporting tools

System Requirements

Administration Console

- > Intel® Pentium® III 650MHz
- > 128 MB
- > 100 MB hard disk

- > Windows 2000(SP4), Windows XP Pro (SP1) or Windows 2003
- > ODBC compatible database

Authentication Server

- > Windows
 - Intel Pentium III 650 MHz
 - 128 MB RAM, 4 GB hard disk
 - Windows 2000(SP4) or Windows 2003
 - ODBC compatible database

Web Help Desk & Self Service Portal

- > Microsoft IIS 5.0, 6.0/Windows 2000/2003
- > Internet Explorer 5.5 SP2 or later

Web Access Agents

- > Sun ONE Web Server 6.0, iPlanet Web Server 6.0
- > Microsoft IIS 5.0, 6.0/Windows 2000/2003
- > Internet Explorer 5.5 SP2 or later

Related Documents

- > ActivClient™ Data Sheet
- > ActivCard Tokens Data Sheet
- > ActivCard USB Key Data Sheet
- > ActivCard CMS Data Sheet

www.activcard.com

ActivCard Corp.

WW Corporate Headquarters
Tel: +1 (510) 574.0100
Fax: +1 (510) 574.0101
info@activcard.com

U.S. Federal Sales Office

Tel: +1 (571) 522.1000
Fax: +1 (703) 988.9636
info@activcard.com

ActivCard Europe S.A.

Tel: +33 (0) 1.42.04.84.00
Fax: +33 (0) 1.42.04.84.84
info@activcard.fr

ActivCard Pty. Ltd.

Asia Pacific and
Australian Headquarters
Tel: +61 3.9843.8888
Fax: +61 3.9843.8800
info@activcard.com.au



AVVID
Partner